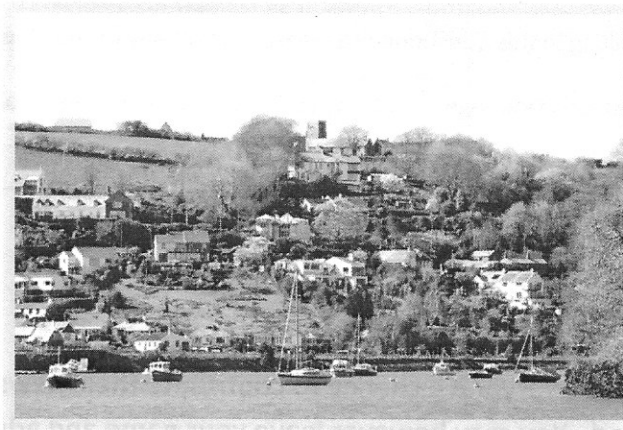




St Sampson Parish Neighbourhood Development Plan 2015 – 2030



A questionnaire to find out your views about Planning and Development in our area.

Introduction.

This detailed questionnaire is part of a consultation process to help us create a **Neighbourhood Development Plan** which will inform planning and development decisions here for the next fifteen years in accordance with the Localism Act of 2011. Thank you to all who completed our initial questionnaire and contributed ideas and feedback at our public meetings. This is the next stage.

We want to find out as much as we can about the views of people living all or part time in St Sampson Parish so **any adult resident can complete a form**. We will leave two forms in each house - further copies are available from any of the Steering Group members shown below. It is not necessary to add your name or address if you do not wish to (but note the Prize Draw below). All responses will be dealt with on the basis of anonymity – **views expressed will not be attributed to individuals**.

If you would like to take a more active part in shaping the plan we invite any resident to join us on the steering group – it is important and interesting work and all are welcome to contribute.

As a thank you for completing and returning this form there is a ***Free Prize Draw***.

Every completed questionnaire returned by 14/10/2015 will be entered in a draw to be held at a forthcoming meeting of the Parish Council. 1st Prize – £100. 2nd Prize £50. Third Prize £25. If a prize winning questionnaire is anonymous we will donate the prize money to Golant Village Hall.

Next steps.

We will analyse your responses and combine them with all the other information we have gathered and then write policies and draft a plan. Once finalized, which includes getting formal approval from Cornwall Council and independent evaluation, the proposed plan will go to a referendum of every adult resident in the Parish where it must be approved by a simple majority of the people before becoming your Neighbourhood Development Plan. Cornwall Council will then adopt it as a formal planning document with substantial influence over planning decisions in St Sampson Parish.

Councillor Sue Reardon, St Sampson Parish. NDP Steering Group Leader.

Any questions about this form?

If you need any help or assistance filling in this questionnaire please contact any of the Steering Group members:

Sue Reardon, Cris Dodridge, Steve Phyllis, Roger Fry, Jenny Kidd, Robin Anderson.

Section 1. A few questions about you.

We need to ensure that we give everyone a chance to contribute their views and also to find out about the make up of our neighbourhood. You may however leave your name and address blank if you wish to remain anonymous.

Your name.....

Your address.....

..... Postcode.....

Your age:

Please put a tick ✓ to answer in the spaces below

18 to 29

30 to 45

46 to 64

65 to 84

85 +

YES

NO

Do you live here permanently?		
If not a full-time resident are you here for more than 3 months of the year?		
If not a full-time resident, do you intend to move to full-time residency here in the next five years?		
Do you own your home here?		
Do you rent your home here?		
Does another member of your family or household own this home?		
Are you in paid employment?		
Are you fully retired from paid employment?		
Will any family members be likely to want a home in The Parish in the next 5 to 10 years?		

Section 2. Setting the scene – Sustainable Development for our Neighbourhood.

In the next section we are seeking your views on planning and development generally. Please answer the questions by putting a tick ✓ in the appropriate box to rate your response. Only put one score for each question. (If you wish to comment further on any point please use the free text box to expand your thoughts.)

Q2.1 The Localism Act was introduced in November 2011. The aim of the Act was to devolve more decision making powers from central government back into the hands of individuals, communities and councils. **We would like to gauge whether or not you agree with that aim.** Put a tick ✓

	Strongly disagree	Disagree	Neutral / no opinion	Agree	Strongly agree
How far do you agree with that aim of the Act?					

Other comments on the aim of the Act (please insert).

Q2.2 How important is it to you that the views of people living in St Sampson Parish are taken account of when planning decisions which affect life here are made by planning authorities? Put a tick ✓

	Very unimportant	Unimportant	Neutral / no opinion	Important	Very important
How important that local views are taken account of?					

Other comments on taking account of local opinions (please insert).

Q2.3 Would you like to see more new housing development in St Sampson Parish? Put a tick ✓

	Strongly oppose more housing	Moderately oppose more housing	Neutral / no opinion	Moderately support more housing	Yes, strongly support more housing
Are you for or against more housing in the Parish?					

Other comments on housing generally (please insert) – we go into detail about where houses might be built later on.

Q2.4 Would you like to see more **commercial** development in St Sampson Parish? Put a tick ✓

	Strongly oppose more commercial development	Moderately oppose more commercial development	Neutral / no opinion	Moderately support more commercial development	Yes, strongly support more commercial development
Are you for or against more commercial development in the Parish?					

Other comments on commercial development (please insert) - we go into detail about types of development later on.

Q2.5 The Government view is that there is a **clear presumption in favour of sustainable development**. How important is it to you that such development is **sympathetic to the character and size** of St Sampson Parish?

Put a tick ✓

	Very unimportant	Unimportant	Neutral / no opinion	Important	Very important
How important is it that development is sympathetic to the size and character of the Parish?					

Other comments on sustainable development (please insert).

3. The economic role of planning.

Q3. 1 If there was a proposal to **open small businesses** in the village how much would you support or oppose them?

Put a tick ✓

	Strongly oppose	Moderately oppose	Neutral / no opinion	In favour	Strongly in favour
Cafe					
General shop					
Farm / community shop					
River-based activities business					
Provision of land for growing fruit and vegetables					
Arts and crafts shop					
Other comments on small businesses (please insert)					

Q3. 2 Employment opportunities in our Parish are currently limited. How important is it that we create or encourage jobs within the Parish? Put a tick ✓

	Very unimportant	Unimportant	Neutral / no opinion	Important	Very important
How important is it that we create or encourage local employment					

Other comments on jobs (please insert).

Q3. 3 How do you rate the existing **infrastructure** in St Sampson Parish for meeting current needs and likely needs over the next 15 years? Put a tick ✓

	Very inadequate	Inadequate	neutral / no opinion	Adequate	More than adequate
Access road down from main road (B3269)					
Roads in Golant village area					
Parking provision in Golant for residents					
Parking provision in Golant for visitors					
Communications/connectivity/internet					
Mobile phone signal/wifi					
Alternative transport options - public footways/cycle paths/bridleways/water taxi					
Bus/train/road/taxi links					
Water dispersal/sewerage facilities					
Other comments on infrastructure (please insert).					

Section 4. A social role for planning.

If development is to be sustainable it should provide a high quality built environment which meets the needs of present and future generations and promotes a vibrant local community. This is about getting it right for our Parish.

A Neighbourhood Development Plan cannot prevent all development but it can play an important role in determining what is built and where.

Our previous Questionnaire responses indicated that we do not all agree about how much development, if any, should take place so we are trying to find common ground and build a consensus on aspects of development. Where there is a strong divergence of opinion we should nonetheless try to shape policies which reflect the things we do agree on.

In the next section we are asking about suitable locations where sustainable development might take place and how we can encourage development which is sympathetic to our Parish.

Q 4.1 If **housing** development were to take place, in which of the following locations should it be? Put a tick ✓

	Strongly unresponsive	Unsupportive	Neutral / no opinion	Supportive	Strongly supportive
Redevelopment / enlargement of housing stock in existing Golant Village area					
Infilling development in existing Golant Village area/Brown field sites					
Greenfield sites in extension of Golant Village area					
Greenfield sites at the "top of the Village" – Torfrey area and up to the main road (B3269)					
Greenfield sites in wider Parish					

Q4.2 If **commercial** development were to take place, in which of the following locations should it be? Put a tick ✓

	Strongly unresponsive	Unsupportive	Neutral / no opinion	Supportive	Strongly supportive
In the existing Golant village area					
In the wider Parish					

Q4. 3 What **constraints** should be placed on new building or re-development of existing buildings? Put a tick ✓

	Should not be a constraint	neutral / no opinion	Important constraint
Ridge heights consistent with surrounding buildings			
Low rise only			
In keeping with character of Village			
Not reduce existing views of neighbours or block light			
A change of use which needs Planning Permission must provide sustainable benefits for the neighbourhood			
Other comments on constraints (please insert)			

Q4. 4 What do you think about the current **mix of the housing stock** in the Parish? **Put a tick ✓**

	Not enough	Just right	Too many
Large houses			
Small houses			
Affordable housing			
Social housing			
Housing for rent			
2 nd homes / holiday lets			
B&Bs			
Houses for elderly/supported people			

Q4. 5 How important is it to you that we value and maintain the following Parish/Village assets or amenities for the benefit of all? **Put a tick ✓**

	Very unimportant	Unimportant	Neutral / no opinion	Important	Very important
Golant Village Green					
The Village Hall					
The Playground					
Free access to the Pill/river/slipways/quay					
St Sampson's Parish Church					
Public car park					
Reserved parking for residents					
Public toilet					
The Downs					
The Saints' Way and other public footways					
Other comments on assets (please insert)					

Q4.6. How do you rate the **facilities, land and building utilisation** in the Parish for the following groups of residents and visitors? **Put a tick ✓**

	Not enough provision	Just right	More than enough
Children			
Young people (teenage to young adults)			
Older people			
Less able bodied/visually impaired/ poor health			
Other comments on those with particular needs (please insert)			

Section 5 - An environmental role for planning.

Q. 5.1 How important is it to you that we **protect our environment** or reduce our carbon footprint in the following ways? Put a tick ✓

	Very unimportant	Unimportant	Neutral / no opinion	Important	Very important
Support small scale solar panels on/near new buildings and re-developments					
Support large array solar panel "farms" on suitable fields					
Support small scale private wind turbines on suitable land/buildings					
Support large array wind "farms" on suitable fields					
Form a Community Energy Project					
Developments should demonstrate how their design/ construction/ operation will minimize fossil fuel use and natural resources					
Create an environmental management plan for the Downs					
Other comments on environment (please insert)					

Q.5.2 Are existing **environmental management controls** adequate to protect our natural and built environment?

Put a tick ✓

	Relax or loosen existing controls	Just right – keep as they are	More needs to be done/ improve/tighten controls
Abandoned/dilapidated boats/wrecks			
Recycling/ refuse collection /litter			
Road speed limits			
River speed limits			
Semi derelict/ dilapidated buildings			
Other comments on environmental controls (please insert)			

Section 6. What makes St Sampson Parish special?

In this section we want to find out about quality of life issues and what is best about living in St Sampson Parish so that we can factor your preferences into Planning decisions.

Q6.1 What are the best things about living in St Sampson Parish? For example you might like...”living near the river”, the “wildlife”, “our community organisations”, “ peace and tranquility” etc.

Please write in your top 5 things or aspects of life which you most like about living here. (No need to rank them in order.)

The Good Life.

Q6.2 What are the worst things about living in St Sampson Parish? If there are any things you really do not like about life here please list them - no need to rank them. No need to list trivial matters but if it is important to you it may be important to others also.

Please write in your 5 worst things or aspects of life which you most dislike about living here (if any).

Gripes.

Q6.3 Other issues. Please tell us about any concerns **related to Planning and Development** not covered elsewhere in the Questionnaire here which are important to you.

--

Thank you for taking the time to complete your form. Every comment will be read and retained. We will endeavour to incorporate the widest possible range of opinions so as to write balanced and inclusive policies for **your** Neighbourhood Development Plan.

We will call to collect forms on **7/10/2015** or alternatively please return your form to any of the Steering Group members or leave your form in an envelope marked SSNDP in the tray at The Fisherman’s Arms in Golant.

*****DEADLINE FOR ENTRY into the FREE PRIZE DRAW IS 14/10/2015.*****