

St Sampson Parish Plan January 2003



The Vital Villages Initiative

Cornwall Rural Community Council sent details of this initiative for Parish Plans and the Parish Council held an open meeting in Nov 2001, which was very well attended. A working group was formed and a grant successfully applied for from the Countryside Agency. It was decided not to use consultants given the small size of the village and the knowledge already available.

The group created a questionnaire and delivered a copy to every household in the Parish. The results of the 66% response were collated into a preliminary report and then analysed. The final survey results were shown at another open meeting held in Dec 2002 where parishioners comments were invited. A new, smaller group then went on to produce St Sampson Parish Plan in Jan 2003.

Why have a Parish Plan?

The Parish Plan is more than just a report on the survey results. It draws together the identified needs of the community, addresses their feasibility and how and when they can be implemented.

It links in with existing or future strategies from organizations that have an impact on the development of community services and facilities. These include amongst others :- roads and traffic, planning and development, crime, the environment and health issues that are regulated by statutory authorities such as Cornwall County Council, Restormel Borough Council, the Police and the Health Authority.

It also provides a lobbying tool as it can demonstrate evidence of local need and commitment to potential outside sources of funding.

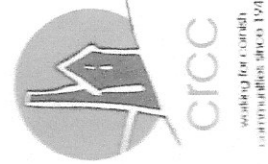
Glossary

- Parish Council—PC
- Restormel Borough Council—RBC
- Cornwall County Council—CCC
- Fowey Harbour Commissioners—FHC
- British Trust for Conservation Volunteers—BTCV
- Royal Society for Prevention of Accidents—RoSPA
- South West Water—SWW

- Working Group
- Mike Smith
- Patrick Fox
- Sue Reardon
- Shelia Navey
- Angela Forsyth
- Kate Renwick
- Barbara McMillan

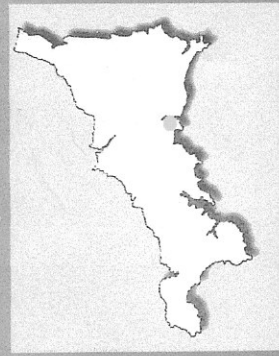
Analysis & Plan Group

- Sue Reardon
- Angela Forsyth
- Kate Renwick



St Sampson Parish

This small rural community is situated in the Fowey Estuary Area of Outstanding Natural Beauty in Mid Cornwall. The population is approximately 220 of which the majority are retired or nearing retirement age. Most housing is centred on the village of Golant, a third of which are holiday or second homes.



The Issues

- ▲ No large scale new developments
- ▲ Homes for local families and young couples
- ▲ High percentage of holiday and second homes
- ▲ Planning enforcement



The Present Situation

Most people in the Parish do not want to see any large scale development, however the need for homes for local families and young couples is recognised, particularly with regard to affordability. Concern has been expressed that any new low cost housing in the Parish could simply swell the number of holiday homes regardless of any initial restrictions placed on them.

There is a wide spread belief that Restormel Planning needs to be more active in pursuing unauthorised development.

The majority of residents have off road parking at their homes, for those who do not, the 2 village car parks and the road were the main solutions.

Actions

Monitor housing need and continue surveillance of planning applications

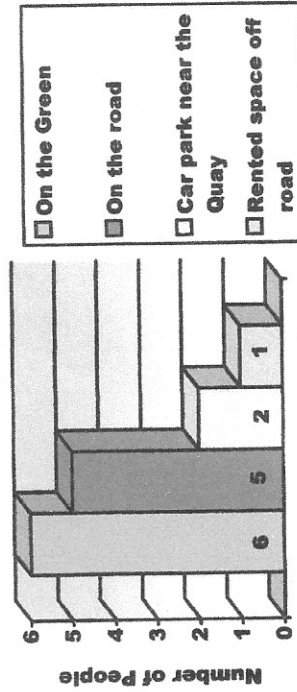
PC, RBC

On-going

Stakeholders

Time-Scale

Places used for car parking



Policy Statement

- * The Parish does not support any major new development
- * Low density in-filling within the existing village boundary is supported

Employment

The Present Situation

There is an ageing population, the largest group are no longer in paid employment. Many people arrive in the Parish post retirement.

The survey showed the majority of parishioners are in favour of creating further jobs within the Parish most probably in the form of small workshops.

Actions

Monitor and encourage opportunities for job creation in the Parish

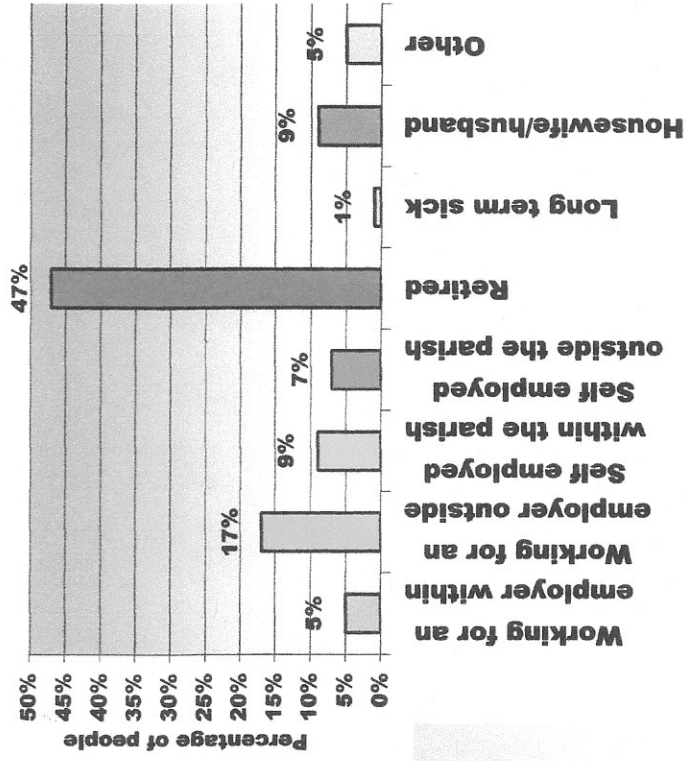
PC, RBC

On-going

Stakeholders

Time-Scale

Categories of Employment in the Parish

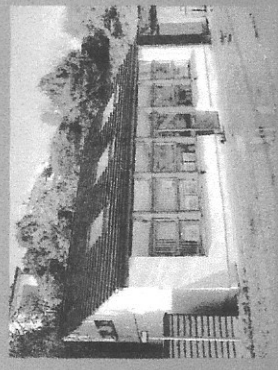


Policy Statement

- # The Parish supports local job creation

The Issues

- ▲ Largely retired population
- ▲ Most people who work do so outside the Parish
- ▲ The majority are in favour of job creation within the Parish



The Issues

- ▲ Insufficient numbers of suitably aged children to warrant a play school group
- ▲ All schooling takes place outside the Parish
- ▲ Provision of Adult Part Time Education courses in the village



The Present Situation

The lack of any organised pre-school group locally reflects the paucity of below state school aged children. Golant village school closed in 1947 since when all schooling necessitates travel outside the Parish. The survey indicated those involved with full time state education were satisfied with local provision. A wish was expressed that all school children, not just primary school aged, could be picked up and returned by the school buses into the village itself, not to terminate at Torfrey 1/2 a mile outside it. A degree of interest has been shown for Adult Education courses to be run in the Village, mostly of a recreational nature. The Village Hall Committee has now implemented a growing programme of courses. IT training will become feasible when the Cybervan project is realised.

Actions

Monitor state education provision and access

Provide Adult Education opportunities locally

Implement Cybervan Project

Stakeholders

PC, CCC, Fowey Grammar School Fund

Village Hall Committee, St Austell College

Golant Cybervan Group

Time-Scale

On going

Implemented

Short term



Policy Statement

- * The Parish is satisfied with the local state education service
- * Local Adult Education provision is encouraged

Transport and Roads

The Present Situation

There are no public transport links, Golant is totally dependent on the car for transport. The closest bus service passes Castledore, a walk of 1 1/2 miles into the village. Little support was shown for the idea of providing a community bus. Passenger trains were discontinued in the '60s since when the line has been used for transporting china clay to Fowey docks. A lot of support has been shown for use of a regular passenger train service should it be reintroduced.

As a possible consequence, practically every household in the Parish owns at least one vehicle. Car parking in the village, particularly in the summer, can cause problems mostly due to the large numbers of visitors using the river. The speed of traffic is often too high, at present there are no restrictions.

Actions

Monitor the need for a bus service into the village

Link into any initiative to provide a passenger train service

Review lease of the Quay side car park

Review double yellow line provision, impose 20mph speed limit in village and push for 30mph limit in upper village

Policy Statement

- # The Parish wishes to recreate public transport links into the village
- # The problems created by traffic speed and car parking will be constantly reviewed

The Issues

- ▲ No bus service into the village
- ▲ No passenger trains
- ▲ Car parking
- ▲ Traffic speed



Time-Scale

On-going

On-going

Implemented

Short term

Stakeholders

PC, Local Bus Operators

PC, Train Operators, Imerys, Fowey + Lostwithiel Town Forums + Chambers of Commerce

PC, RBC

PC, CCC

The Issues

- ▲ Maintenance of existing footpaths
- ▲ Status of unofficially recognised routes
- ▲ Management of Golant Downs



The Present Situation

There are 5 footpaths and bridleways in the Parish on the County definitive map. One of these forms part of the long distance path, the Saint's Way, and is well used by walkers all year round. Maintenance is provided jointly by the Parish and County Councils under Footpaths Partnership. Paths quickly become overgrown in the late Spring / early Summer if cutting back is not timely.

There are several routes that exist which for some unknown reason are not officially recognised. A review is currently under way to ascertain the correct status of each of these and to begin the process of updating the County definitive map where indicated.

It is hoped that overall management of Golant Downs will be improved as a 'knock on' effect. Funding has been found to make improvements to the Upper Downs path, create small cleared areas on the Downs to increase biodiversity and to buy in expert advice on the general management of the area.

Actions

Constantly monitor state of existing paths

Review status of unofficial paths

Create a management program for Golant Downs

Stakeholders

PC, CCC

PC, CCC

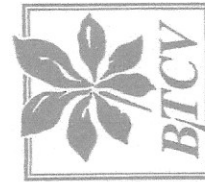
PC, CCC
People's Places Fund, BTCV

Time-Scale

On-going

Medium Term

Medium Term



Policy Statement

- * The Parish is committed to maintaining its foot path and bridleway network
- * The Parish will ensure the accuracy of the County Definitive Map

Shopping

The Present Situation

Instant Post Office and stores will permanently close in a few months' time. This is set to become a big issue locally. There are several elderly residents who are totally reliant on the services the village shop has provided. A visit to the shop provided them not only with shopping but company and exercise as well. Lack of public transport links create extra difficulties for parishioners wanting to go shopping. The survey indicated strong support for some form of alternative in the village.

Actions

Campaign for Post Office provision in the village

Stakeholders

**PC, Local Community
The Post Office**

Encourage some form of village shop

PC, Local Community

Time-Scale

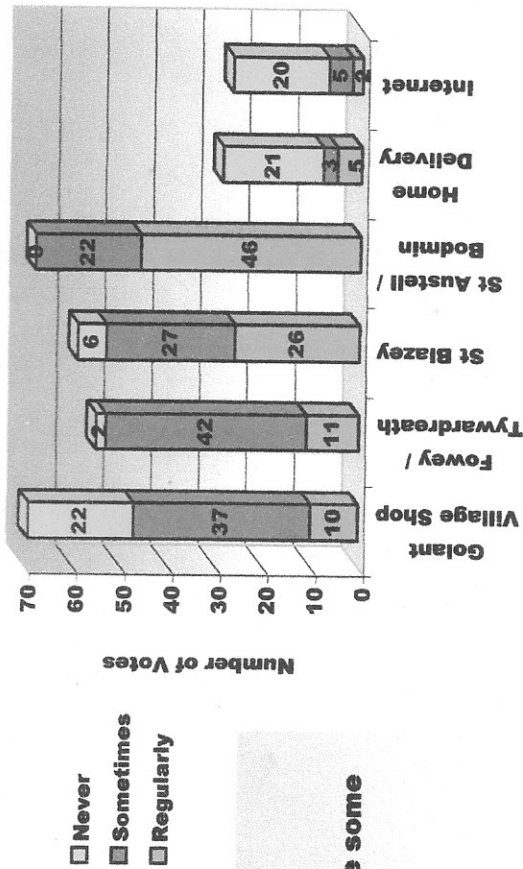
Medium Term

Medium Term

Policy Statement

*** The Parish will actively seek to provide some form of Post Office service in Golant**

Chart to show where grocery shopping is done



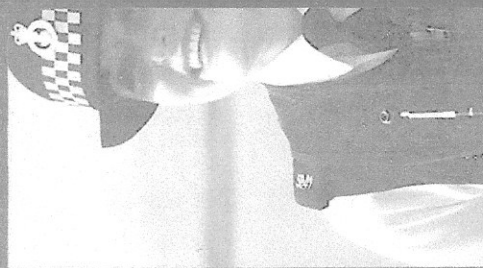
Taclow da a wber yn Golnans

▲ Village shop and Post Office is closing



The Issues

- ▲ Difficulties in getting emergency service vehicles to properties
- ▲ Crime on the river



The Present Situation

Problems have occasionally been caused by some village lanes being too narrow for emergency service vehicles to pass through. Particularly in the Summer, cars parked inappropriately can cause obstructions.

The Parish does not have any road name signs and this has led to delays as the correct address could not be found. The provision of the village map at Chapel cross has proved very helpful. Generally crime in the Parish is low. The setting up of Boatwatch some years ago has been very effective in reducing boat related theft from the river, however this still remains the biggest crime problem.

Actions

Ensure car parking does not obstruct the road

Give copies of the village map to emergency services

Maintain vigilance against crime



Stakeholders

PC

PC

Police, Neighbourhood Watch, Boatwatch, Local Community

Time-Scale

On-going

Implemented

On-going

Policy Statement

- * The Parish supports any initiative to fight crime
- * The Parish continues in its support of Neighbourhood Watch and Boatwatch

The Present Situation

Some years ago the possibility of laying the gas main into the village was put forward, however the cost turned out to be prohibitively high.

The library van calls at Golant every other Tuesday in the month and is well supported especially by more elderly residents who do not drive.

The Public toilets on the Front are much appreciated by locals and visitors alike, particularly in the tourist season when large numbers of people are using the river.

The public telephone box is also sited on the Front and could prove vital in case of an emergency on the water. Mobile phone coverage is patchy in the village.

Actions

Liaise with service providers as necessary

Stakeholders

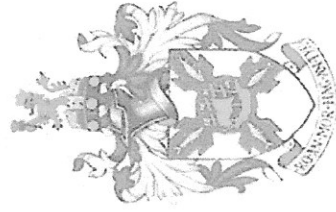
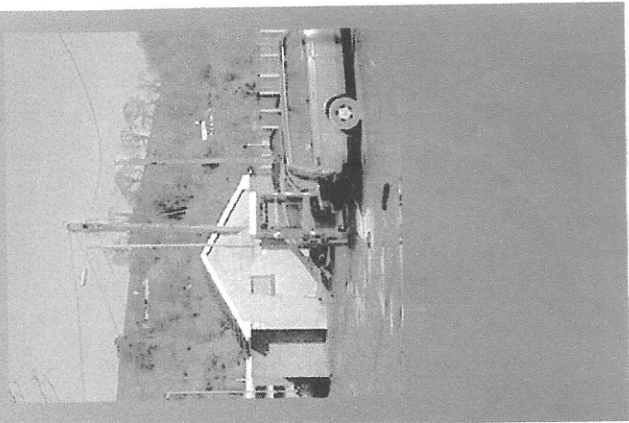
PC, RBC
BT

Time-Scale

On-going

The Issues

- ▲ No mains gas
- ▲ Library van
- ▲ Public toilets
- ▲ Telephone box

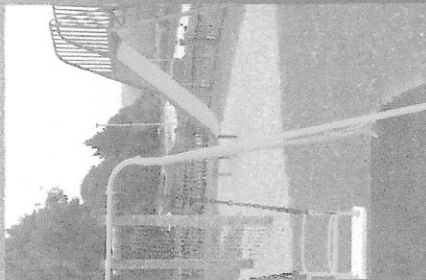


Policy Statement

- # The Parish appreciates these services and supports their continuing provision

The Issues

- ▲ The Village Green
- ▲ The play area
- ▲ Reinstatement of football posts



The Present Situation

Due to the small size of population most organised team sports take place outside the village. Golant is fortunate to have the village green which provides an open space for recreation. It includes a children's playground. Most people are satisfied with the local level of sports facilities. The Green is used mainly to take children to the playground and for village events such as Carnival and Sports Day. The Parish Council is seeking funding to provide new playground equipment. It will shortly reinstate the broken football posts.

Actions

Maintenance of the Green area

Maintenance of play area

Install goal posts

Stakeholders

PC, Local Community

PC, RoSPA, Local Community

PC, Local Community

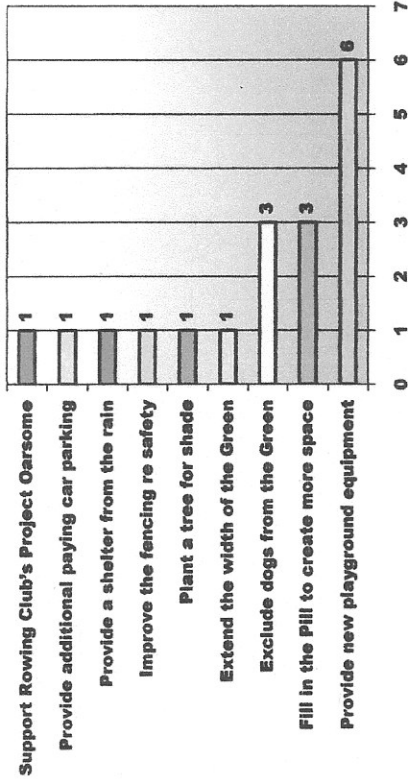
Time-Scale

On-going

On-going

Short term

Suggested improvements to sports / leisure facilities



Policy Statement

The Parish values the Green and will maintain it for use by all comers

The Present Situation

The survey revealed at least 15 clubs and groups located within the Parish with more than half the population belonging to one or more of them. Activities are based on the Village Hall, the Church, the Pub or the river.

The Village Hall committee continue to work hard at modernising the building. They have recently joined the 'Carn to Cove' programme to bring performing Arts events into the village and initiated a series of part time adult education courses.

The Parochial Church Council is in the midst of the restoration of St Sampson's church. The installation of an efficient heating system has expanded the use of the building beyond its primary religious function. The Fisherman's Arms licensees are very community minded and often give a venue for informal parish group meetings as well as events.

Information about what's happening in the village is published in 'Fowey News', the church newsletter and the village notice board. A suggestion has been made that the village creates its own web site; so far no one has offered to act as web master.

Actions

Continue to modernise the Village Hall

Completion of church restoration program

Find a web master for a village site

Stakeholders

Village Hall Committee

Parochial Church Council

Local Community

Time-Scale

Medium term

Medium term

Short term

Policy Statement

* The Parish supports the work of local groups and appreciates the community spirit that results

The Issues

- ▲ The Village Hall's new programs
- ▲ Church refurbishment
- ▲ Communicating information about 'What's on'



Taclow da a wher yn Golnans

The Issues

- ▲ Sewerage discharge into the river
- ▲ Surface water drainage
- ▲ Kerbside recycling
- ▲ Dog mess



The Present Situation

Sewerage from Golant is discharged into the river without treatment. Despite persistent lobbying, South West Water have no plans to even commence work on some form of treatment before Dec 31st 2005 and only then because of an EU directive. The overwhelming majority of people living in or around the village are very dissatisfied with this situation. Inadequate drainage of surface water from the village's roads during wet weather can cause a nuisance especially when the drains become blocked by silt. Chapel crossroads has persistent difficulties. The existing kerbside collection of recyclable rubbish is much used. Calls have been made to extend the service to include the collection of plastics and compostable garden waste. Although owners' attitudes are slowly changing, dog mess remains a problem, especially on the Green. There has been a suggestion put forwards to install a biodegrading dog toilet.

Actions

Continue lobbying SSW for action

Liase with Restormel over drains & rubbish

Informal talks over dog mess

Stakeholders

PC, SSW, Environment Agency, FHC

PC, RBC

PC, Local Community

Time-Scale

Long Term

On-going

Short term

Policy Statement

- * The Parish deplores the sewerage situation & continues to lobby SSW for an early solution
- * The Parish supports the provision of kerbside recycling and favours its expansion
- * The Parish supports the dog toilet initiative



Tacloaw da a wher yn Golnans

The Present Situation

The Parish has few street lights. When asked 2 years ago, there was no support to install any more. The orange sodium lighting they provide is not much liked and calls have been made to put cowls on each to project the light downwards and thus reduce light pollution.

In the recent past there was an initiative to bury all overhead cables in Areas of Outstanding Natural Beauty. Unfortunately nothing further was heard. Parishioners have expressed their continuing interest in such a project.

The Parish on the whole is a well kept area however many wish the old tin sheds on the Front and the dilapidated workshops in the Pill to be put into good repair or removed.

Actions

Stakeholders

Time-Scale

Lobby Restormel to install street light cowls

PC, RBC

Medium Term

Monitor any future initiative concerned with cabling

PC

Long Term

Monitor the condition of the old sheds especially with regard to public safety

PC, Owners, Local Community

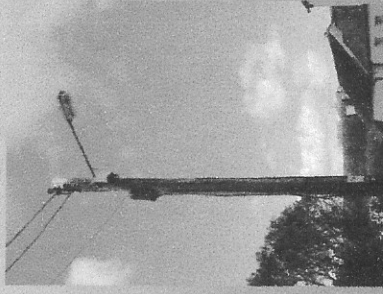
On-going

Policy Statement

- The Parish is in favour of reducing light pollution from street lights
- The Parish supports the burying of overhead utility cables in principle provided no long term environmental damage would result

The Issues

- ▲ Light pollution from the street lights
- ▲ Bury all overhead utility cables
- ▲ Delapidated tin sheds on the front are an eyesore



The Issues

- ▲ Number of moorings on the river
- ▲ Village roads and car parking spaces struggling to cope with number of river users
- ▲ The extent of the mud on the railway side of the river
- ▲ Water quality



The Present Situation

The Fowey Estuary is a designated Area of Outstanding Natural Beauty and attracts many visitors by road and water. The number of moorings in the river has steadily increased, local feeling is that there are now too many. The large number of visitors to the riverside in the village puts pressure on local lanes and car parking. The road to the Quay often resembles the M25 on a Friday night. Many years ago the mud was dredged from the river, the survey showed support for this to be reintroduced.

Complaints have been made about the water quality due to the sewerage situation making swimming, inadvertent or otherwise, possibly inadvisable.

Actions

Pass on concerns over moorings and knock on effects on the village

Investigate removing the mud banks between the pill bridge and the quay

Lobby for action on the sewerage situation

Stakeholders

PC, FHC, Fowey Estuary Partnership

PC, FHC

PC, SWW, Environment Agency

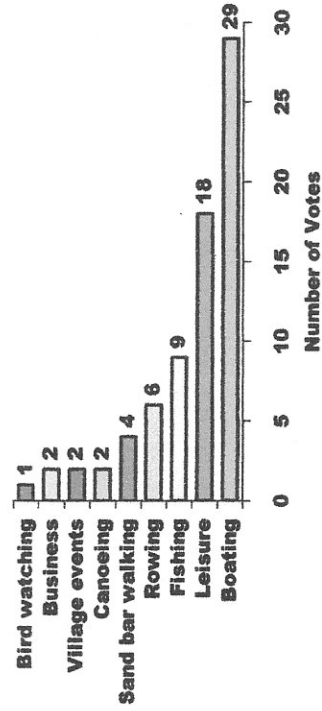
Time-Scale

Short term

Long term

Long term

Activities on the River



Policy Statement

* The Parish wishes to maintain a balance between welcoming all users to the river and environmental damage through over use

The Present Situation

The Pill is the tidal area between the causeway and the foreshore at Golant, connected to the main river by a bridge. It provides safe moorings for many boats, especially over winter. The northern end in particular is clogged with mud, many people have expressed the wish to see this dredged to improve the surroundings. The dredgings could be used to fill in the ditch near the play area thereby removing another eyesore and creating extra car parking space.

Some major capital schemes have long since been suggested. The one with most local support is to fill in the Northern end of the Pill to create a new flat space on which could be built a new community centre, sheltered retirement homes, tennis courts, winter boat storage and additional car parking. Another with little support is to raise the level of the foreshore road to prevent flooding of the road at Springs high tide. This could then allow the last of these ideas to possibly work, the installation of a lock gate under the bridge to retain the tide and create a floating marina inside the Pill. Few people are in favour.

Actions

Investigate the removal of mud and infilling the ditch

Ascertain degree of interest in possible infilling the Northern end of the Pill and trace sources of major funding

Stakeholders

PC, RBC, FHC, Golant Quay Users Association

PC, RBC, FHC, CCC, Golant Quay Users Association

Time-Scale

Medium Term

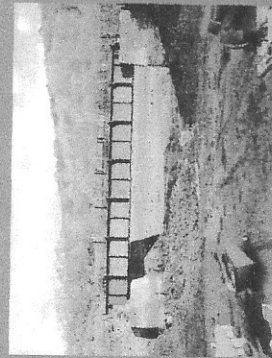
Long Term

Policy Statement

- The Parish supports any initiative that will improve the environment of the Pill provided the wishes of all users are taken into consideration

The Issues

- ▲ Reduce the amount of mud in the Pill
- ▲ Fill in the ditch by the play area
- ▲ Fill in the top end of the Pill
- ▲ Raise the level of the foreshore road



Ta clow da a wber yn Golnans

The information contained in this Parish Plan provides a 'snap shot' of life in St Sampson Parish in January 2003 and gives a picture of the wishes and aspirations of the people who live here. The Parish Plan is the end result of the Vital Villages Initiative but its use is only just beginning as it now gives a benchmark against which progress on the actions detailed in it may be judged. Of the many actions proposed, some will take considerable time to implement, some will have to be adapted and others may never happen at all. It is the responsibility of the Parish Council in partnership with all the Stakeholders listed to pursue these goals.

Actions

Implementation of all the actions proposed in this plan, with possible adaptations according to changes in circumstance and the needs of the community.

Stakeholders

Parish Council in conjunction with all listed stakeholders

Time-Scale

On-going



Tacloow da a wber yn Golnans

'Tacloow da a wber yn Golnans'

'Good things happen in Golant'

Policy Statement

* The Parish supports the implementation of the St Sampson Parish Plan